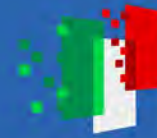




Finanziato
dall'Unione europea
NextGenerationEU



Ministero
dell'Università
e della Ricerca



Italiadomani
PIANO NAZIONALE
DI RIPRESA E RESILIENZA



Università
Ca' Foscari
Venezia

Data analysis



Finanziato
dall'Unione europea
NextGenerationEU



Ministero
dell'Università
e della Ricerca



Italiadomani
PIANO NAZIONALE
DI RIPRESA E RESILIENZA



Università
Ca' Foscari
Venezia

Data transcription and analysis

Gesture analysis

- Kdenlive 23,04,1;
- ELAN 6,9



Finanziato dall'Unione europea
NextGenerationEU



Ministero dell'Università e della Ricerca



Italiadomani
PIANO NAZIONALE DI RIPRESA E RESILIENZA



Università Ca' Foscari Venezia

ELAN

analysis

The screenshot displays the ELAN 6.9 software interface. At the top left, a video window shows a man in a suit speaking. To the right of the video are control panels for 'Volume' (set to 100) and 'Rate' (set to 100). Below these are playback controls including play, stop, and seek buttons. The main area is a timeline from 00:00:00.000 to 00:00:04.000. A transcription track shows the text: 'Questo | u | dato | di | fatto, | ch | i | abbiamo | ben | visto...'. Below the transcription, a 'Hand' track shows 'Shrug gesture' with a 'palm up' annotation. A 'Gesture type' track shows 'What can I do?' with an 'Obviousness' annotation. The interface includes various tabs like 'Lexicon', 'Comments', and 'Controls'.

ELAN 6.9



Finanziato
dall'Unione europea
NextGenerationEU



Ministero
dell'Università
e della Ricerca



Italiadomani
PIANO NAZIONALE
DI RIPRESA E RESILIENZA

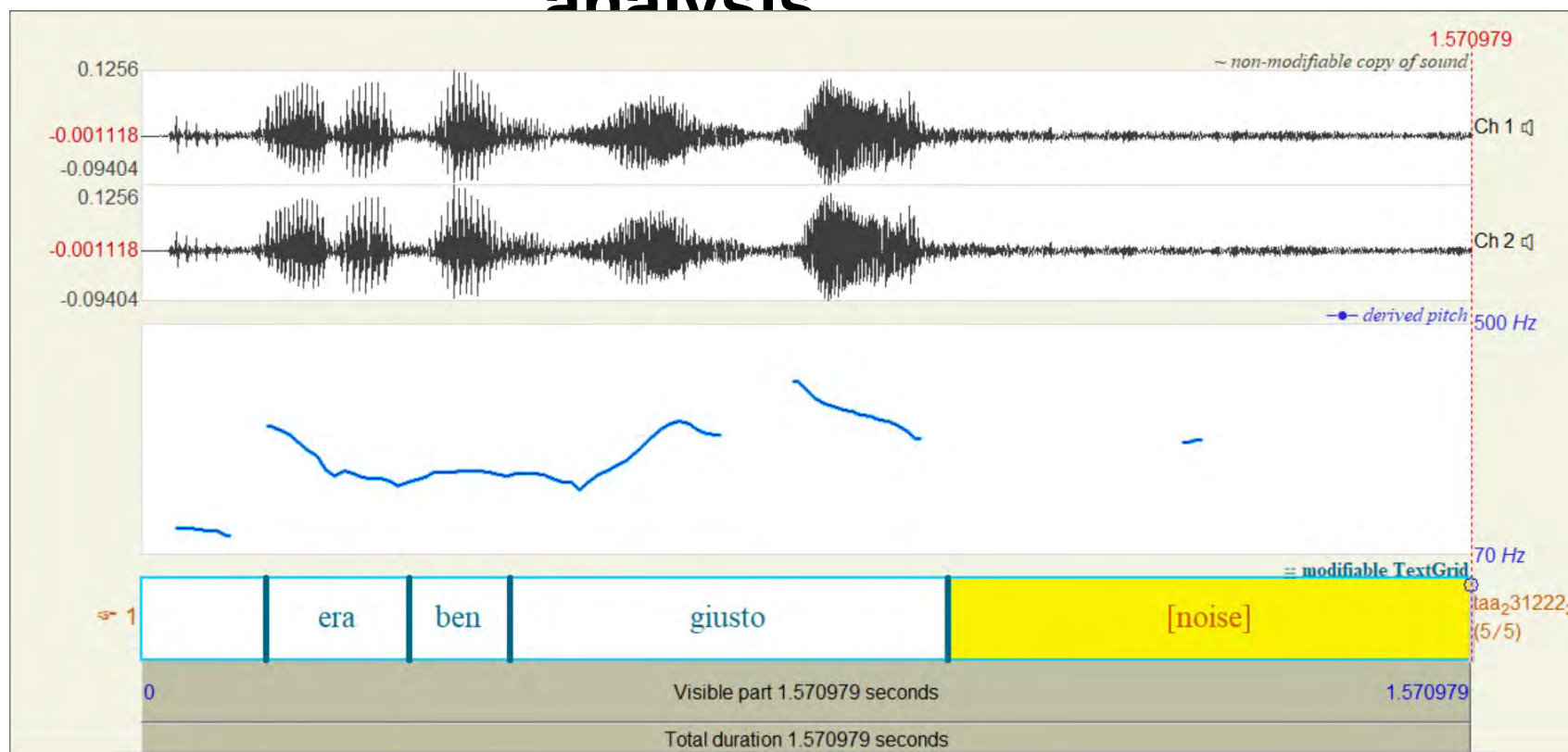


Università
Ca' Foscari
Venezia

Gesture coding

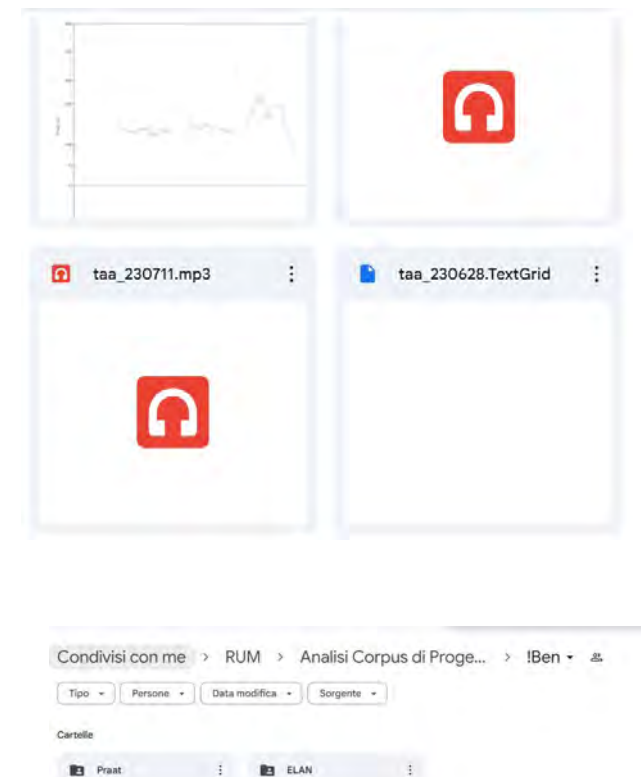
- Regarding manual gestures, our analysis focused on the **stroke phase** of each gesture (Kendon 2004; Bressem & Ladewig, 2011);
- The entire **gesture unit** (preparation phase, stroke, and hold phase) was considered to represent the full scope of the gesture within the sentence.

Prosodic analysis



Praat 6,4,23

RUM Drive folder





Pitch settings

Pitch settings for the filtered autocorrelation method

(your current pitch analysis method is indeed filtered autocorrelation)

Where to search...
(you have standard time step settings; see Analysis menu)

Pitch floor and top (Hz): 70.0 500.0

How to view...
Unit: Hertz (logarithmic)
View range (units): 0.0 (= auto) 0.0 (= auto)
("auto" means "same as pitch floor and top")
Drawing method: automatic

How to find the candidates...
Max. number of candidates: 15
 Very accurate

How to preprocess the sound...
Attenuation at top: 0.03

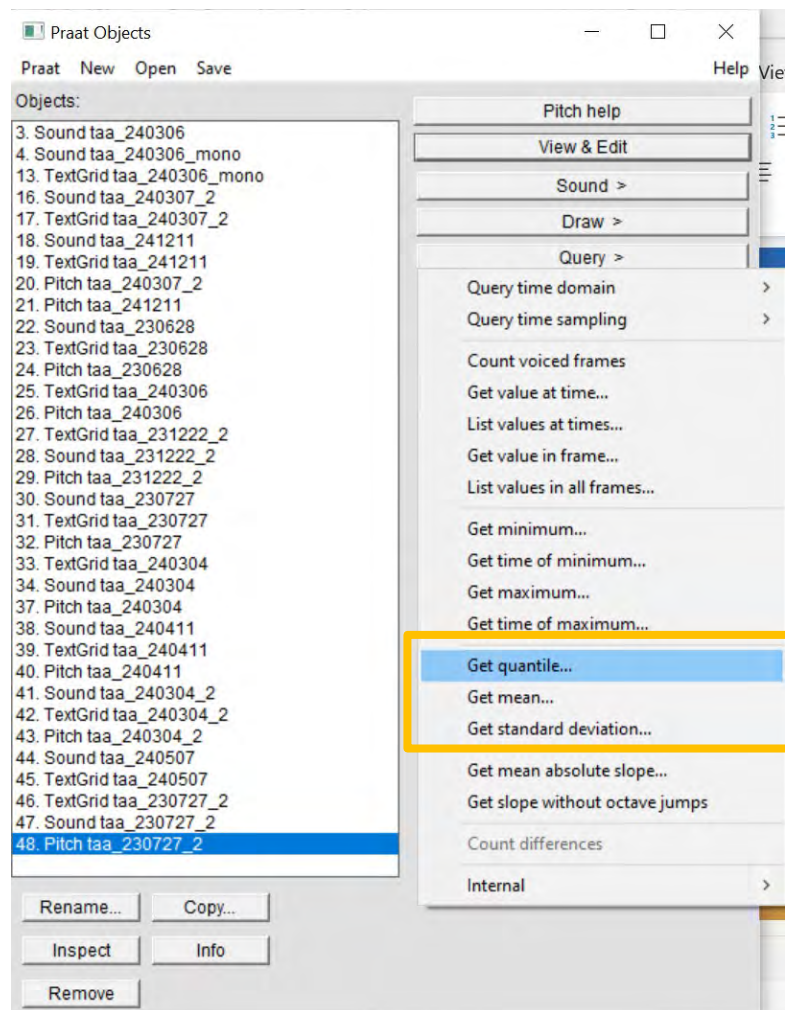
How to find a path through the candidates...
Silence threshold: 0.05
Voicing threshold: 0.45
Octave cost: 0.055
Octave-jump cost: 0.5
Voiced / unvoiced cost: 0.14

1.570979
~ non-modifiable copy of sound:
Ch 1
Ch 2
derived pitch: 500 Hz
70 Hz
[noise]
1.570979 seconds

Male speaker



Pitch analysis



Type	Excel occurrence	Audio file	Pitch Item (Hz)	Median baseline (Hz)	SD baseline (Hz)	z score	Results
MP	9	240306	135,24	126,33	18,29	0,48	
MP	10	240307_2	142,87	121,44	19,61	-0,83	
MP	33	241211 (primo ben)	121,14	127,12	23,74	-0,25	
	33	241211(secondo ben)	165,79	127,12	23,74	1,62	*
MP	42	230628	120,02	113,23	15,53	0,43	
MP	45	230727	144,64	188,08	46,73	-0,92	
AVV	12	240411	193,17	173,91	18,31	1,05	*
MP	6	240304	272,02	194,19	44,48	1,77	*
MP	7	240304_2	167,88	125,16	17,61	2,42	***
AVV	1	250114	329,98	225,99	29,51	3,52	***
AVV	14	240507_2	139,76	121,99	14,54	1,22	*
AVV	43	230711	130,15	129,6	23,26	0,02	
AVV	2	240123	155,75	144,67	16,35	0,67	
AVV	3	240123_2	272,4	220,99	30,03	1,71	*
AVV	5	240207	227,13	211,62	27,56	0,56	
AVV	19	240509	205,82	202,94	53,56	0,05	
AVV	22	240605	107,4	104,18	14,31	0,22	
AVV	23	240606	186,6	220,49	32,49	-1,04	*
AVV	4	240124	191,38	165,08	20,46	1,28	*

Evaluation of pitch prominence relative to the speaker's baseline (Hz)



Finanziato
dall'Unione europea
NextGenerationEU



Ministero
dell'Università
e della Ricerca



Italiadomani
PIANO NAZIONALE
DI RIPRESA E RESILIENZA



Università
Ca' Foscari
Venezia

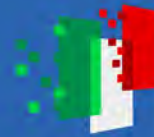
Result s



Finanziato
dall'Unione europea
NextGenerationEU



Ministero
dell'Università
e della Ricerca

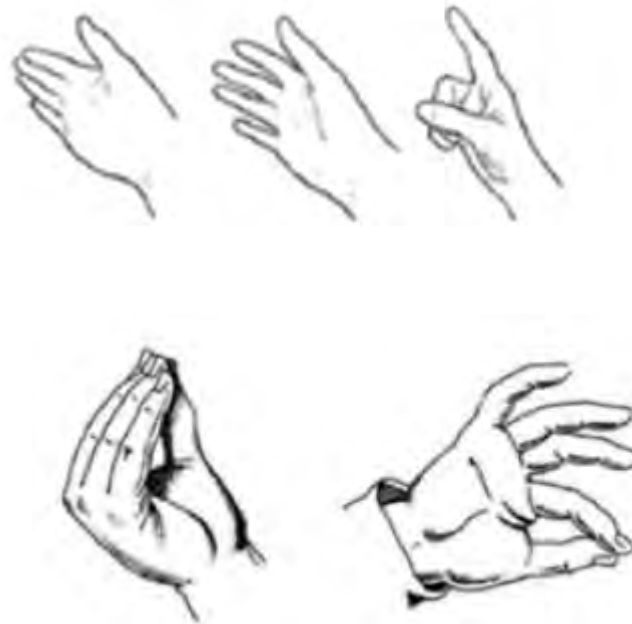


Italiadomani
PIANO NAZIONALE
DI RIPRESA E RESILIENZA



Università
Ca' Foscari
Venezia

Handshapes observed (Schoonjans 2018:101)

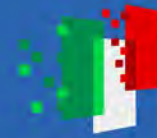




Finanziato
dall'Unione europea
NextGenerationEU



Ministero
dell'Università
e della Ricerca



Italiadomani
PIANO NAZIONALE
DI RIPRESA E RESILIENZA



Università
Ca' Foscari
Venezia

Deixi s

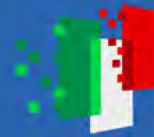
Taa_240124
MP *ben*



Finanziato
dall'Unione europea
NextGenerationEU



Ministero
dell'Università
e della Ricerca



Italiadomani
PIANO NAZIONALE
DI RIPRESA E RESILIENZA



Università
Ca' Foscari
Venezia

Gesture analysis on *ben*

ALIGNMENT

– The **apex of the PALM UP** gesture is aligned with the middle of the TCU (Turn Constructional Unit), within a minor intonation unit (IU) characterized by a **flat contour**.

- This alignment suggests that the gesture itself highlights this portion of the information, even though no prominent pitch accent is present (Ferré & Mettouchi 2020)